

Transitions



Staying On Track Despite the Pandemic

The IOG's approach may be different these days, but its mission to promote successful aging stays the same. Since mid-March, the IOG has . . . [MORE](#)



IOG Hero, Dwana Bass Embraces Hands-on Care in ER [READ HERE](#)

IOG in the News



April 30, 2020

[As COVID-19 Ravages Nursing Homes, a New Push for Better Senior Housing](#)



March 26, 2020

[When Dementia Meets the Coronavirus Crisis](#)

Outreach

EARN 2.5 CONTACT HOURS!

Ninth Annual Fall Alzheimer's Conference

Institute of Gerontology | alzheimer's association
THE BRAINS BEHIND SAVING YOURS

Tuesday, November 10, 9 a.m.-noon | Virtual Conference

A MEANINGFUL LIFE WITH ALZHEIMER'S DISEASE
Bringing together healthcare professionals and caregivers

KEYNOTE: GWEN GRADY, M.D.

Gwen Graddy, M.D., serves as the chief medical officer for PACE Southeast Michigan, the state's first Program of All Inclusive Care (PACE) site aimed at keeping a frail, nursing home eligible population in the community by using a multidisciplinary approach. She is board certified in internal medicine and geriatrics with special interest in Alzheimer's disease, nursing home care, spirituality, aging and wellness, health disparities and cultural competency, and the role of women's support groups on stress reduction and improvement of work-life balance.

Dr. Graddy is consistently ranked as a top physician and speaks extensively on healthy aging, caregiving, and Alzheimer's and dementia. She is a Fellow in the American College of Physicians and serves on many local and national committees and boards, including the Alzheimer's Association Board of Directors.

Alzheimer's Conference via Zoom on Nov 10

Free to caregivers & healthcare professionals. Nurses, social workers, OT, PT earn 2.5 contact hours. [Details](#). Henry Ford Health

Preventing Healthy Aging in Detroit and Beyond

Caregiver Connection
Stories and Resources to Help you Help Others

Click to view recent issue

October 17-19

These are the final chapters from 2019. Future entries will be in the present as KC and Sumi cope with isolation and COVID's dangers. The video above and the entry that follows are from June 2.

Sumi Remembers
by KC Mehta

Caregiver Connection eNewsletter

Resources, events and scam/fraud alerts sent monthly, especially for caregivers of older adults. Free. [See all issues of Caregiver](#)

System Chief Medical Officer Dr.
Gwen Graddy keynotes. [Flyer](#)

Register

[Connection here](#) plus special IOG
Covid resources.

Subscribe

Awards & Honors



Dr. Jeske Damoiseaux promoted to associate professor with tenure in the Department of Psychology in August.



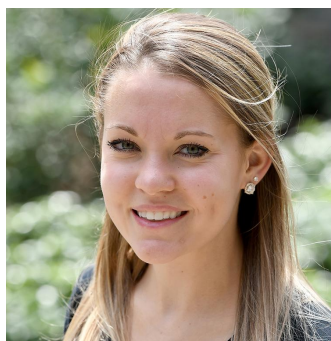
SAFE Director LaToya Hall's work featured in [Urban Aging News](#) Summer 2020, pg 12



IOG pre-doc trainee **Roya Houmani** won the [Blue Cross Blue Shield Foundation Award](#) 2020-21



Dr. Lichtenberg elected president of the [Gerontological Society of America](#). He also wins a specialty [Geropsychology Award](#)



Erika Squires, pre-doc trainee, co-first authors an article in the [American Journal of Audiology](#) on educational materials for age-related hearing loss



Dr. Wassim Tarraf earned a promotion to associate professor with tenure in the Department of Health Care Sciences in August.



Remembering James Jackson, PhD (1944-2020)

James Jackson died peacefully on September 1 after an incredibly courageous battle with . . .
[. MORE](#)

Volunteer for Research

The ELECTRA Study Seeks Volunteers for Memory Research

to better understand potential biomarkers that may predict cognitive loss and be the earliest signs of Alzheimer's disease. [The ELECTRA Study](#) seeks African-American males and females, ages 65 and over. Eligible volunteers will have:

- Brief neurological assessments
- Tests of memory and thinking
- An electroencephalogram (EEG), which is a non-invasive recording of tiny electrical signals from the top of the head.

Volunteers receive compensation for participation.

Call **313-577-1276** or email at ELECTRA@wayne.edu to learn more.

Do You Qualify for OurWALLET Study?

The IOG study — WALLET (Wealth Accumulations & Later-life Losses in Early cognitive Transitions) — is recruiting men and women age 60 and older who manage their own household finances, but feel like their memory is slipping. To learn more, [CLICK HERE](#)

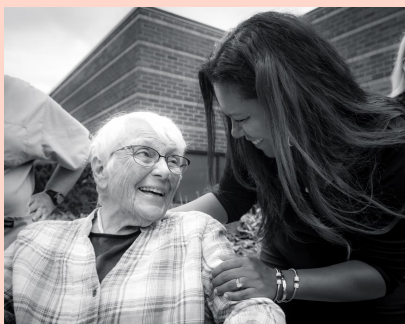
Questions? Contact Vanessa at **313-664-2604** or vrorai@wayne.edu

How are you coping with the Covid-19 pandemic?

Wayne State University and the University of Kentucky are studying people's social and psychological reactions to this crisis. Please help us by completing the brief, anonymous survey. Invite others to take the survey, too, and share on social media. [CLICK HERE](#) to take the Covid-19 Experience Survey.

Partnership Corner

IOG partners support our educational and outreach events, helping us provide specialized training in aging-related issues to thousands of professionals caring for older adults.



[Homewatch CareGivers of Southeast Michigan](#) is an in-home care agency that offers a wide variety of tailored, expert-level services to support people of all . . . [MORE](#)



[Waltonwood Senior Living](#) provides service and quality care to seniors across Michigan, North Carolina, and Virginia. Throughout the pandemic . . . [MORE](#)

The Wayne State University Board of Governors

Visit the IOG Website

